



# Wrisco Industries Inc.

## DALLAS DIVISION

12102 CORPORATE DRIVE • DALLAS, TX 75228  
800-627-8848 • 972-270-8848 • FAX 972-613-7823  
WEB SITE [www.wrisco.com](http://www.wrisco.com) • E-MAIL [dallas@wrisco.com](mailto:dallas@wrisco.com)



### QUALITY AND SERVICE SINCE 1916

SALES AND DISTRIBUTION CENTERS IN PRINCIPAL CITIES

ATLANTA, GA • CHICAGO, IL • DALLAS, TX • EDISON, NJ • PALM BEACH GARDENS, FL



## ALUMINUM SUPPLY CATALOG

**WRISCO INDUSTRIES INC.** is proud to present to you our sales and service catalog booklet. The **"NEW WRISCO"** now offers you a wide variety of aluminum products and painted steel items to better meet your demanding needs into the 21st century! With **WRISCO'S** high-quality products and superior services, we are confident that we can benefit your business today and tomorrow! Enjoy the benefits **WRISCO** has to offer by calling **1-800-627-8848** today!



TABLE OF CONTENTS	1
ALUMINUM SHEET, BLANK AND COIL AVAILABILITY STOCK CHART	2
CUSTOM COMPUTERIZED SHEET METAL FABRICATION	3
STOREFRONT WALL PANELS	4
ALUMINUM TREAD BRITE SHEETS	4
ALPOLIC® ALUMINUM COMPOSITE MATERIAL (ACM)	5
24 GAUGE GALVALUME KYNAR STEEL	6
ALUMINUM SHEETS AND SIGN BLANKS	7
CHANNEL LETTER COILS	8
COIL PROCESSING CAPABILITIES	9
CUSTOM PAINT FINISHING	9
THANK YOU FOR YOUR BUSINESS	10

### TERMS OF SALE

**NET 30:** Credit Approved Accounts Only

**COD:** Cash, Certified Funds or Customer Check Upon Approval

**CREDIT CARD:** MasterCard, Visa, American Express and Discover



**800-627-8848 • 972-270-8848 • FAX 972-613-7823**  
**WEB SITE [www.wrisco.com](http://www.wrisco.com) • E-MAIL [dallas@wrisco.com](mailto:dallas@wrisco.com)**



## ALUMINUM SHEET, BLANK & COIL AVAILABILITY STOCK CHART

### PREPAINTED & MILL FINISH ALUMINUM



- |   |                                  |
|---|----------------------------------|
| <b>Black Gloss .032/.040/.050/.063</b>        | <b>Extreme Red .040</b>          |
| <b>Black Gloss/Black Gloss .040/.050/.063</b> | <b>Heron Blue .040</b>           |
| <b>Black Matte .032/.040/.050/.063</b>        | <b>Ivory/Ivory .040</b>          |
| <b>Black Matte/Black Matte .040</b>           | <b>Ivory .040</b>                |
| <b>Bronze .024/.032/.040/.050/.063</b>        | <b>Ivy Green .040</b>            |
| <b>Bronze/Medium Bronze .040</b>              | <b>Light Gray .040/.050/.063</b> |
| <b>Brown .040</b>                             | <b>Mocha Tan .040</b>            |
| <b>Burgundy .040</b>                          | <b>Pepsi Blue .040</b>           |
| <b>Caution Yellow/Caution Yellow .040</b>     | <b>Purple .040</b>               |
| <b>Caution Yellow .040</b>                    | <b>Red/Red .040/.050</b>         |
| <b>Chevron Blue .040</b>                      | <b>Red .040</b>                  |
| <b>Chevron Blue/Chevron Blue .040</b>         | <b>Shell Gray .040</b>           |
| <b>Construction Orange .040</b>               | <b>Yellow/Yellow .040/.050</b>   |
| <b>Extreme Green .040</b>                     | <b>Yellow .040/.063</b>          |

**White/White .020/.024/.032/.040/.050/.063/.080**

**Super Brite White/Super Brite White .040/.063**

**Matte White .024/.032/.040/.050/.063**

**Mill Finish (3105 & 5052) .024/.032/.040/.050/.063/.080/.090/.125**

**Aluminum Tread Brite .063/.080/.100/.125**



### PREPAINTED CANOPY COLORS

- |                                |  |
|--------------------------------|--|
| <b>Amoco Black .050/.063</b>   | <b>Hess White .040/.050/.063</b>         |
| <b>BP Green .050/.063</b>      | <b>Light Gray .040/.050/.063</b>         |
| <b>BP Pearl .050/.063</b>      | <b>Mobil White .040/.050/.063</b>        |
| <b>Chevron Blue .050/.063</b>  | <b>Phillips 66 Bronze .040/.050/.063</b> |
| <b>Chevron White .050/.063</b> | <b>Shell Gray .040</b>                   |
| <b>Citgo White .050/.063</b>   | <b>Shell RVI Yellow .063</b>             |
| <b>Conoco Khaki .050</b>       | <b>Sunoco Blue .063</b>                  |
| <b>Exxon Red .050/.063</b>     | <b>Texaco Black .050/.063</b>            |
| <b>Exxon Sandstone .063</b>    | <b>Texaco Red .050/.063</b>              |

### ANODIZED

- |  |                                       |
|--|---------------------------------------|
| <b>Dark Bronze .040/.063</b>               | <b>Bright Brushed Gold .040</b>       |
| <b>Extra Dark Bronze .040</b>              | <b>Gold Satin .032/.040</b>           |
| <b>Light Bronze .040</b>                   | <b>Bright Clear .032/.040</b>         |
| <b>Clear .032/.040/.050/.063/.080/.125</b> | <b>Bright Brushed Clear .032/.040</b> |
| <b>Bright Gold .032/.040</b>               | <b>Black .040</b>                     |

### FLUROPON – KYNAR

**Bronze .040 · Extra Dark Bronze .040 · Black/Bronze .040**

**Bone White .040/.063 · Hartford Green .040**

**More Fluorpon – Kynar Colors Available Upon Request – Call For Color List**





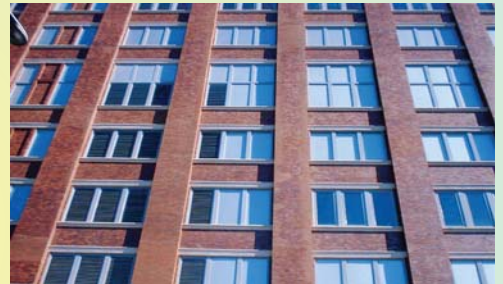
## CUSTOM COMPUTERIZED SHEET METAL FABRICATION

**THE ONE-STOP METAL SUPPLIER AND FABRICATOR!**

**WRISCO INDUSTRIES INC.** can benefit your business with custom computerized sheet metal fabrication to your exact specifications on *our state-of-the-art RAS Turbobend Plus metal forming brake system!* Wrisco offers custom computerized brake formed parts up to 10' in length. Custom shearing or slitting up to 10' in length, custom notching up to 6", closed or open hemming are just a few of the services Wrisco can provide your company!

All you need to do is provide Wrisco with your exact measurements and Wrisco will fabricate the piece to your precise specifications - **aluminum or steel!** Imagine, quality parts and quick turnaround at a competitive price! Just fax us your drawings and begin saving time and money today!

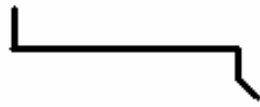
Wrisco is proud to service the following industries: glass, storefront, curtain wall, signage, sheet metal, roofing, awning, gas station canopy, race car, trailer body, lighting, construction, refrigeration, display, exhibit, architectural metal and more!



U-CHANNEL



ANGLE



SILL FLASHING



PEDESTAL WALL COVER



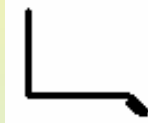
FLAT HEM



BOX PANEL



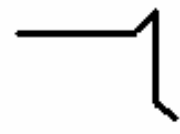
SEAM PANEL



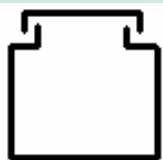
DRIP



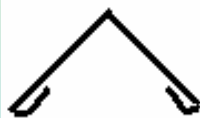
VALLEY



GRAVEL STOP



RACEWAY



PEAK CAP



Z CLOSURE



COPING



DRIP EDGE



GUTTER

**DISCOVER FOR YOURSELF - NOBODY BEATS WRISCO FABRICATION ALUMINUM OR STEEL, SEND US YOUR SPECS TODAY!**



## STOREFRONT WALL PANELS

**WRISCO INDUSTRIES INC.** can benefit your storefront business needs with our high-quality prefinished painted or anodized aluminum laminated storefront wall panels. **Wrisco's** panels are designed for walls, ceilings, partitions, fascias, mansards, signage or any number of additional uses and applications. **Wrisco's** storefront panels are PVC masked aluminum sheets laminated both sides on a variety of substrates to best suit your specific job requirements. **Wrisco** provides a time and money saving panel that the competition just can't beat! Looking for custom panels, call **Wrisco** today!

### 1" FOAM AND CORRUGATED PLASTIC WALL BOARD PANEL

Storefront panels consist of an aluminum overlay on both sides laminated to exterior 1/4" corrugated plastic on both sides with 1/2" foam sheet in the middle core to create a 1" total thickness wall panel. Stocked size 48" x 120".

### 1/4" CORRUGATED PLASTIC WALL BOARD PANEL

Storefront panels consist of an aluminum overlay on both sides laminated to an exterior grade 1/4" corrugated copolymer plastic core. Available in 48" x 120" sheets.

### SUPRA-ARC GLAZING PANELS

Storefront panels designed for use in any glazing system from 1/4" to 1". Stock sizes 48" x 120". Enjoy the benefits of a thermoplastic core in a quality, affordable panel. Ask today about the various storefront panel substrates, colors and sizes **Wrisco** has to offer.

- CLEAR ANODIZED SMOOTH
- EXTRA DARK BRONZE ANODIZED SMOOTH
- BRONZE STUCCO EMBOSSED
- WHITE STUCCO EMBOSSED
- BRONZE SMOOTH & WHITE SMOOTH
- SILVER METALLIC STUCCO & SMOOTH
- CALL FOR OTHER FINISHES



## ALUMINUM TREAD BRITE SHEETS

**WRISCO INDUSTRIES INC.** can supply your aluminum tread brite sheeting job requirements. **Wrisco** inventories sheets in .063, .080, .100 and .125 gauge. Custom cut-to-length sheeting, blanking and recoiling capabilities are available to satisfy your special needs. Save time and money by having **Wrisco** shear and fabricate your pieces to your exact specifications. Call today for details!



## ALPOLIC® ACM ALUMINUM COMPOSITE MATERIAL

**WRISCO INDUSTRIES INC.** is a proud distributor of **ALPOLIC®'S ALUMINUM COMPOSITE MATERIAL (ACM)**! ALPOLIC® panels are available for both exterior and interior applications, and have been used extensively in exterior architectural applications such as building fascia, cladding service station canopies, storefront entryways and column covers. ALPOLIC® is also the ideal choice for signage, store fixturing, foodservice merchandisers, kiosks, POP displays, trade show exhibits and fascia systems. Mitsubishi Plastics Composites America, Inc., the world leader in aluminum composite material technology, produces ALPOLIC®.



ALPOLIC® is produced by bonding two thin sheets of aluminum continuously under tension on either side of an extruded thermoplastic core. ALPOLIC® aluminum composite panels retain remarkable tensile strength and deliver superior flatness, rigidity, vibration dampening, extreme durability, ease of maintenance and stability under changing thermal conditions. Being the perfect system for building cladding, ALPOLIC®'s lightweight and easy to attach panel system speeds construction times, cuts costs in labor and materials alike.



Wrisco inventories ALPOLIC®'s most popular corporate identity program colors and white. All ALPOLIC® standard stock and preformulated products are available through Wrisco. In addition, Wrisco can offer your design project unique architectural finishes such as ALPOLIC®'s Stone Series Composite: marble and granite; Textured Composite: stucco, wood grain and leather; Exotic Metal Composite: copper, stainless steel, titanium and zinc and Storefront Decorative Metal Composite: high polished, brushed and anodized.



ALPOLIC® is available in both polyester and fluoropolymer finishes that offer the distinct advantages of vibrant colors and multiple gloss levels. A wide array of colors are accessible to meet any job requirement. More than fifty corporate identity program colors are available in addition to eight architectural stock colors. Custom color inquiries welcomed. For more information on ALPOLIC®'s Aluminum Composite Material, visit Wrisco's web site [www.wrisco.com](http://www.wrisco.com) or ask your salesperson for the free ALPOLIC® Information CD-ROM.

ALPOLIC® is available in addition to eight architectural stock colors. Custom color inquiries welcomed. For more information on ALPOLIC®'s Aluminum Composite Material, visit Wrisco's web site [www.wrisco.com](http://www.wrisco.com) or ask your salesperson for the free ALPOLIC® Information CD-ROM.





## 24 GAUGE STEEL PAINTED KYNAR GALVALUME

**WRISCO INDUSTRIES INC.'S** 24 gauge painted kynar galvalume steel offers you the perfect solution for your roofing, storefront, construction, curtain wall, architectural metal, wall panel and building product needs. **Wrisco's** kynar Solar Reflectant colors can benefit your project with energy efficient, environmentally friendly steel coils and sheets. Enjoy a 30-year limited warranty, high quality product and the superior service that only **Wrisco** can offer. In addition, **Wrisco** can further benefit your business with:

- 48" Standard sheet and coil width
- Custom coil slitting to your width and size
- Standard size sheets 48" x 96", 48" x 120" and custom cut-to-length sheeting
- Custom coil painting available — call for minimum runs
- Custom computerized sheet metal fabrication — send us your specs today — only **Wrisco** can satisfy your job needs from start to finish with sheet metal fabrication

Let **Wrisco** help you create colorful masterpieces today by calling one of our courteous and experienced sales staff today!

BONE WHITE SR	ALMOND SR	SANDSTONE SR	SIERRA TAN SR
CITYSCAPE GRAY SR	MEDIUM BRONZE SR	SHERWOOD GREEN SR	DARK BRONZE SR
MANSARD BROWN SR	MATTE BLACK SR	COLONIAL RED SR	HARTFORD GREEN SR
COPPER METALLIC SR	<p>Colors shown are representative of painted steel colors, but not exact matches. Please contact your local <b>Wrisco</b> Division for actual painted steel samples. SR Denotes Solar Reflectant Color. 30-Year Limited Warranty. Colors and availability subject to change without notice.</p>		





## ALUMINUM SHEETS & SIGN BLANKS

**WRISCO INDUSTRIES INC.** can benefit your sheet and sign blank needs with our in-house *computerized cut-to-length line!* This state-of-the-art line will benefit you with the highest quality sheets and sign blanks, the quickest turnaround on custom orders and the most competitive prices in today's market. Have a need for specialty sheared blanks or long strips? Let **Wrisco** produce them for you on our 12' shear. Looking for a quality consistent source for painted white steel blanks? **Wrisco** now carries **24 gauge painted white steel blanks** cut to your specifications!

WHITE READY-TO-SHIP STOCK CHART						
SIZE/GAUGE	.024	.032	.040	.050	.063	.080
12" x 18"		✓	✓		✓	✓
18" x 24"		✓	✓		✓	✓
24" x 36"		✓	✓		✓	✓
48" x 96"	✓	✓	✓	✓	✓	✓
48" x 120"	✓	✓	✓	✓	✓	✓

### WRISCO OFFERS

- PRECISION CUTTING - UNMATCHED QUALITY
- ALL FINISHES AVAILABLE IN SHEETS or BLANKS
- .024, .032, .040, .050, .063, .080, .090 and .125
- READY-TO-SHIP WHITE SHEETS and BLANKS
- CUSTOM SIZE BLANKING AVAILABLE
- MASKED or UNMASKED

### NEW - PAINTED WHITE 24 GAUGE STEEL BLANKS



**AUTO TAGS**  
**.024 WHITE**



### FINISH YOUR BLANKS WITH...

#### HOLES

1/8", 3/16" STANDARD, 1/4", 5/16", 3/8"

#### CORNERS

1/2", 3/4" STANDARD, 1" and 1 1/2"

**RE/MAX For Sale**  
**MARK SPAIN**  
Greater Atlanta **886-9000**

**Gary Yip**  
EXIT GLOBAL REALTY  
Independent Member Broker  
Broker **678-205-3948**  
CIPS, SRES, E-PRO  
**FOR SALE**

**KELLER WILLIAMS**  
REALTY  
ATLANTA PARTNERS  
678-775-2600  
Doug & Cindy Bunch  
678-775-2605  
**FOR SALE**

**FOR SALE**  
**REALTY EXECUTIVES**  
GIANTofRealEstate.com  
**770-274-9257**

**FOR SALE**  
**Sellstate**  
**Allison Dennis**  
239-229-8158  
Sellstate Priority Realty Network Inc.



## CHANNEL LETTER COILS

**WRISCO INDUSTRIES INC.** can benefit your channel letter needs with high-quality channel letter coil produced on our new computerized cut-to-length slitting line! Painted, Mill or Anodized, Wrisco can slit coils as narrow as 1.5" and recoil any color or finish in gauges .032, .040, .050, .063 and .080! Standard stock items - White, Black and Bronze are ready-to-ship. New **Super Brite White** joins the Wrisco color family! Nobody can rival Wrisco for turnaround on custom slit coil orders. See for yourself why Wrisco is rated the highest-quality channel letter coil supplier in the industry!



### STANDARD STOCK SIZES

.040 x 5.3" x 270'

.032 x 5.3" x 270'

### STANDARD STOCK COLORS

WHITE

BLACK GLOSS

HERON BLUE

YELLOW

BRONZE

RED

MILL FINISH

SUPER BRITE WHITE



## LET WRISCO BENEFIT YOUR CHANNEL LETTER SIGNAGE BUSINESS

- Super Brite White is now available on back side of colors
- All channel letter coil is PVC masked
- Save money – use exactly what is needed – no wasted drop
- Save labor time – already slit perfectly to width
- Works perfectly with all computerized channel letter machinery
- Save freight – coils can be shipped UPS
- Custom widths and lengths – quick turnaround and no surcharges
- All colors available – certain minimums apply
- Matching painted pop rivets available to finish your letters





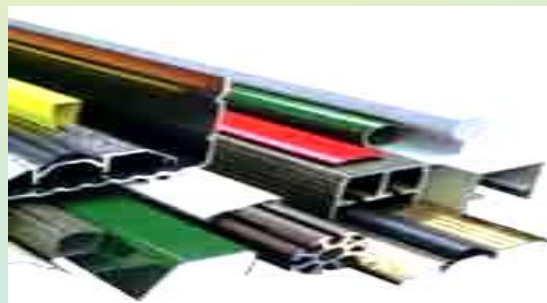
## COIL PROCESSING CAPABILITIES

**WRISCO INDUSTRIES INC.** celebrates the recent installation of our new, 145' long, Iowa Slear 2 Cut-to-Length Line with Leveler. **Wrisco** can now process and level with extremely tight tolerances up to 60" wide coil in gauges .018 through .125! Sheet, slear, slit, blank and recoil, **Wrisco** offers it all in aluminum and now steel! Experience custom slit coil from 1.5" to 60" in width and custom cut-to-length pieces per your specifications. Whether painted, anodized, kynar, mill finish, aluminum tread brite or painted steel, enjoy the speed, quality and precision metal processing that only **Wrisco** has to offer! Visit [www.wrisco.com](http://www.wrisco.com) and view a video of **Wrisco's** new Slear 2 Cut-to Length Line in action!



## CUSTOM PAINT FINISHING

**WRISCO INDUSTRIES INC.** now offers you an alternative source for your custom color paint finishing requirements. **Wrisco** has teamed up with one of the highest quality finishing houses in the United States to provide you with dynamically finished parts. Whether you are looking for custom colored aluminum sheets, three dimensional brake metal shapes, extrusions up to 40', panels, small parts or assembled components, you owe it to yourself to see how much **Wrisco** can save you on high-quality paint finishing. **Wrisco's** paint source vendor prides itself for their attention to quality, thus guaranteeing your projects will stand above the rest in quality and value!



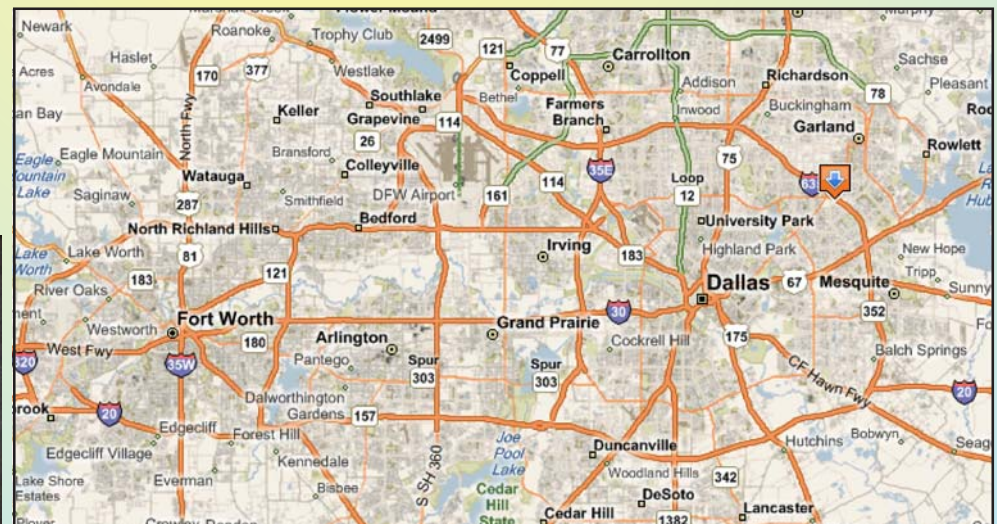
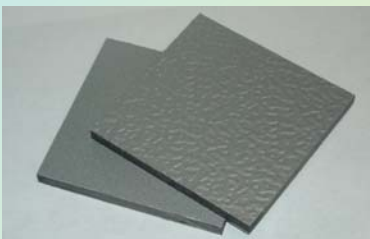
**Wrisco** can provide you with a variety of coating capabilities such as **Kynars, Acrylics, Baked Enamels, Alodines and Specialty Coatings** such as **Two-Tones and Multi-Coats**. Just send **Wrisco** your color sample to be matched or the manufacturer's paint code and experience high-quality paint finishing at a competitive price. Call **Wrisco** for details today!





## THANK YOU FOR YOUR BUSINESS

**WRISCO INDUSTRIES INC.** wishes to thank you for giving us the opportunity to show you how we can benefit your prefinished aluminum sheet, blank, coil, fabrication, signage, storefront wall panel, aluminum composite material, building product, aluminum accessory and steel needs. Please consider **Wrisco** as your vendor of choice for all your aluminum and steel requirements. Let **Wrisco** help you create colorful masterpieces with our high-quality metal building products! Feel free to call one of our courteous, experienced salespeople regarding order inquiries. Once again, from all of us at **Wrisco Dallas**, thank you for your continued support and business.



**12102 Corporate Drive • Dallas, TX 75228**  
**800-627-8848 • 972-270-8848 • FAX 972-613-7823**  
**WEB SITE [www.wrisco.com](http://www.wrisco.com) • E-MAIL [dallas@wrisco.com](mailto:dallas@wrisco.com)**



# Wrisco Industries Inc.

**WRISCO INDUSTRIES INC.** offers you a wide variety of specialized aluminum products and painted steel items to meet your demanding needs! Let **WRISCO** benefit your prefinished aluminum sheet, blank, coil, fabrication, aluminum composite material, signage, storefront wall panel, building product, aluminum accessory and painted steel needs. High-quality products and superior services at a competitive price have been our recipe for success since 1916!

## PREFINISHED ALUMINUM COLOR CHART

**NOTE:** Colors shown are representative of Wrisco's prefinished aluminum colors, but not necessarily exact matches. Colors and availability subject to change without notice.

Citgo White	Chevron White	Ivory	Super Bright White	Matte White	White
Yellow	Shell Yellow	Caution Yellow	Exxon Sandstone	Mocha Tan	Conoco Khaki
Construction Orange	Burgundy	Purple	Exxon Red	Texaco Red	Red
Heron Blue	Extreme Green	BP Green	Pepsi Blue	Chevron Blue	Sunoco Blue
Medium Bronze	Bronze	Brown	Ivy Green	Light Gray	Shell Gray
Bronze Fluoropon	Black Fluoropon	Dark Bronze Anodized	Black Matte	Black Gloss	Bone White Fluoropon
Mill Finish	Bright Gold	Bright Brushed Gold	LA ExtraDark Bronze Anodized	Black Anodized	Clear Satin
Gold Satin	Bright Clear	Bright Brushed Clear			

For the entire list of stock colors and gauges, please visit the "Aluminum Availability Stock Chart" on page 2.

**"CONSIDER US AT YOUR SERVICE — YOUR SATISFACTION GUARANTEED!"**

## DALLAS DIVISION

12102 CORPORATE DRIVE • DALLAS, TX 75228  
800-627-8848 • 972-270-8848 • FAX 972-613-7823  
WEB SITE [www.wrisco.com](http://www.wrisco.com) • E-MAIL [dallas@wrisco.com](mailto:dallas@wrisco.com)